

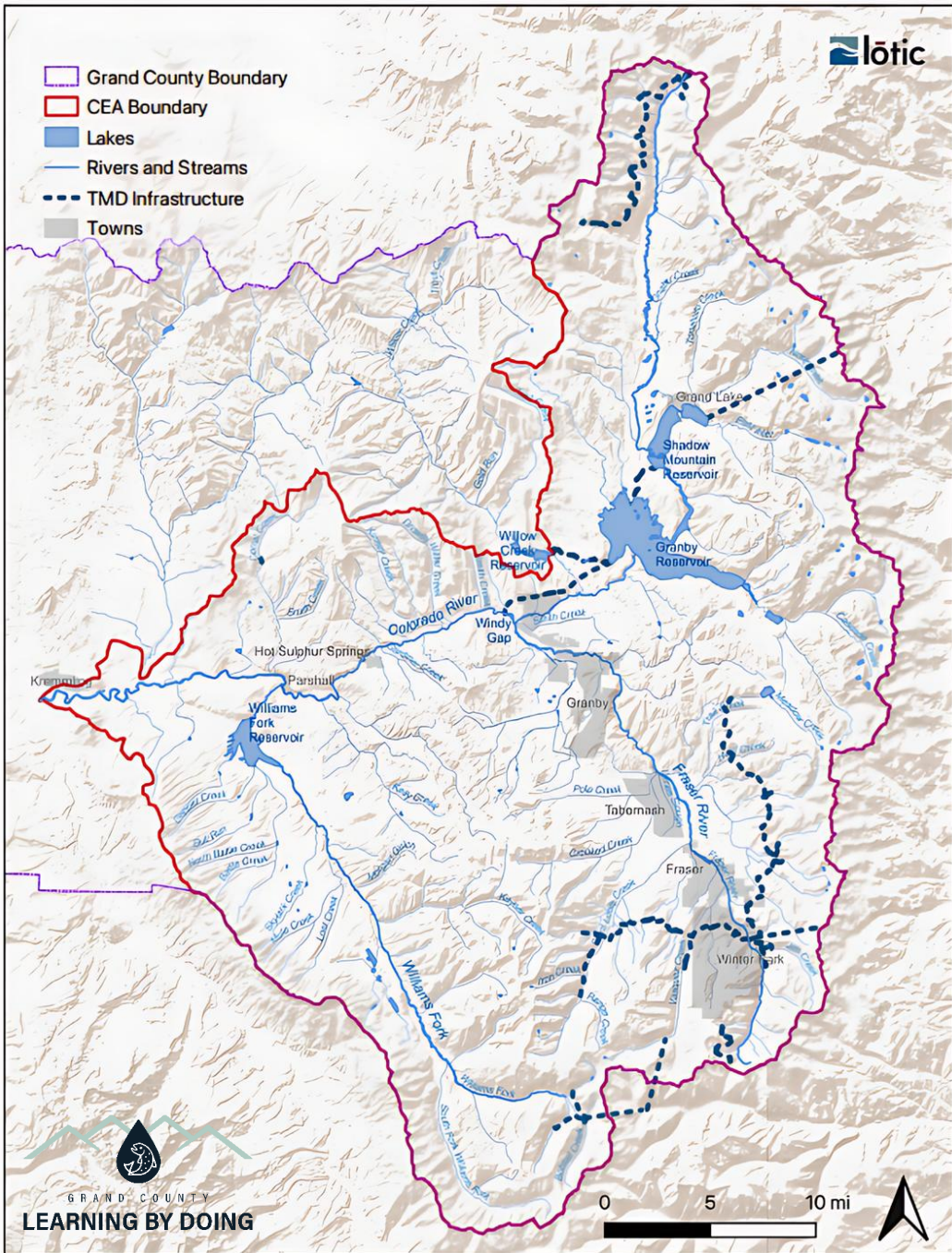
# Grand County Stream Management Plan Update Stakeholder Open House

January 20, 2026



## Purpose of the GC SMP Update

The purpose of this Stream Management Plan is to provide a roadmap for maintaining a **healthy and resilient stream system** within the Cooperative Effort Area in Grand County, Colorado by **protecting, monitoring, and restoring aquatic habitat** while **supporting local water uses and retaining flexibility for future water operations.**



# Cooperative Effort Area



Over 100 river miles in Grand County



Fraser River  
Williams Fork River  
Colorado River

# GC SMP UPDATE SCOPE

The GC SMP:

<u>IS</u>	<u>IS NOT</u>
<p>A Stream Management Plan - Data driven assessments on holistic river health to determine where and how our rivers are impaired.</p>	<p>An Integrated Water Management Plan - Consumptive water use planning (ex. drinking water, irrigation, and industrial).</p>
<p>The development of strategies for effective communication and use of environmental flows within the confines of the existing legal framework and water rights allocations.</p>	<p>An attempt to reverse water development projects that are operating or have been approved.</p>
<p>A way to identify and prioritize management actions that maintain or improve river conditions.</p>	<p>A way to address consumptive water needs.</p>

# GC SMP UPDATE SCOPE

The GC SMP:	
<u>IS</u>	<u>IS NOT</u>
An update of an existing SMP.	A watershed plan or other new and broader planning effort.
A community effort focused on the needs of the river and aquatic habitat with opportunities for stakeholder feedback and input.	Focused on specific individual stakeholder water needs.
Focused on collaboration and solutions for changes in river conditions.	Finding a culprit for changes in river conditions.

# GC SMP UPDATE SCOPE

The GC SMP:	
<u>IS</u>	<u>IS NOT</u>
Focused on rivers and streams.	Focused on lakes or reservoirs.
Geographic scope: LBD's Cooperative Effort Area.	Grand County watersheds in their entirety.
Addressing environmental water needs (ex. target flushing flows).	Addressing agricultural, municipal, industrial, and recreational water needs.

## Stakeholder Ground Rules

- Listen to understand, not respond
- Allow every voice to be heard
- Participate in the discussion
- Treat everyone with respect
- Discuss ideas, not people
- Focus on the topic at hand
- Respect everyone's time
- Talk about what you think and know; let others do the same

# GCSMP Update Planning Process

## Phase 1

Conduct the comprehensive watershed assessment.

Conduct stakeholder outreach.

- Five open house sessions
- Community survey

## Phase 2

Grade the condition of stream reaches.

Prioritize stream reaches based on grades and goals.

Develop communication tools for the GCSMP update.

## Phase 3

Identify, evaluate, and prioritize potential habitat improvement projects.

Develop an implementation plan.

## Stakeholder Advisory Committee Overview

Composed of a smaller group of stakeholders who will review and provide feedback on:

- The draft assessment and ranking report of priority reaches
- Objectives and measurable results
- Potential habitat improvement projects

# Stakeholder Advisory Committee Composition

- Mix of agency/organizations, interest-based seats, and Learning by Doing ex-officio seats
- Agency/organization seats
  - US Forest Service
  - Bureau of Land Management
  - National Park Service
- Interest-based seats (two each)
  - Environment and conservation
  - Tourism
  - Municipal
  - Outdoor recreation
  - Mining/industry
  - Agriculture/irrigators
  - Water and sanitation
  - Community at-large

# Today's Meeting

## **Objectives:**

- Learn about the results of the stream reach grading and prioritization assessments.
- Hear about the upcoming GCSMP website and new data tools.
- Stay up to date on the next phase of the planning process.
- Celebrate the completion of Phase 2!