



# GRAND COUNTY STREAM MANAGEMENT PLAN

LEARNING BY DOING

# SMP COMMUNICATIONS UPDATE

1/20/26 – Stakeholder Outreach Meeting

# UPDATES

**01**

**GCWIN DATA PLATFORM**

**02**

**SMP WEBSITE & BRANDING**

**03**

**NEXT STEPS**

# GCWIN DATA PLATFORM

---



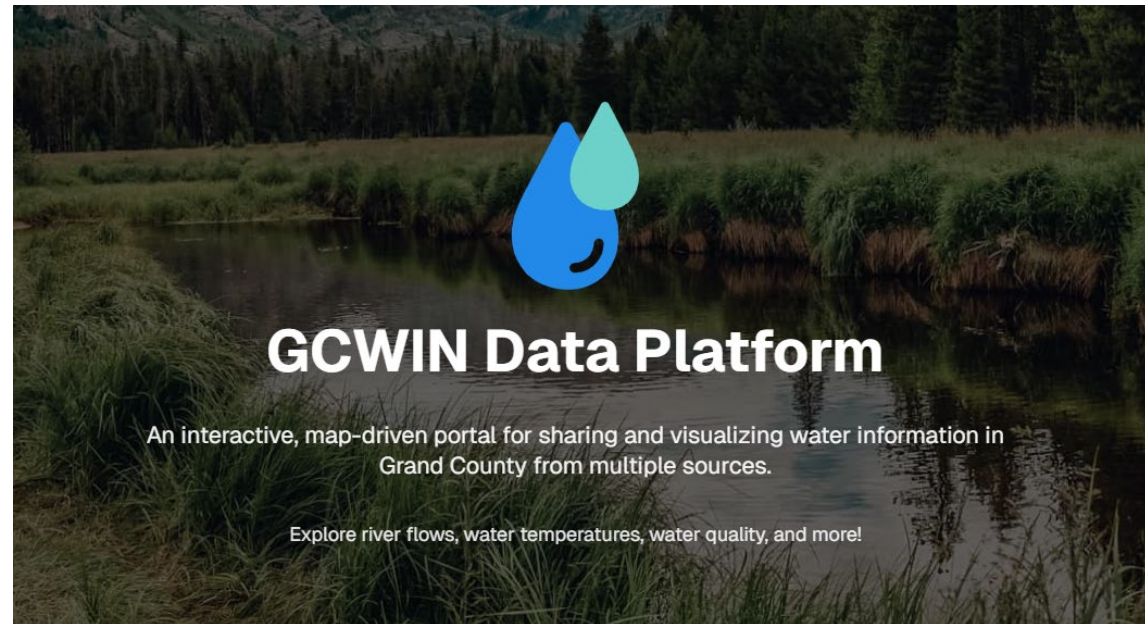
# GCWIN DATA PLATFORM

GRAND  
COUNTY  
STREAM MANAGEMENT PLAN

## Centralized Data Hub

- GCWIN
- USGS
- Northern Water
- Denver Water
- & other agencies

## Data Supports SMP Grades



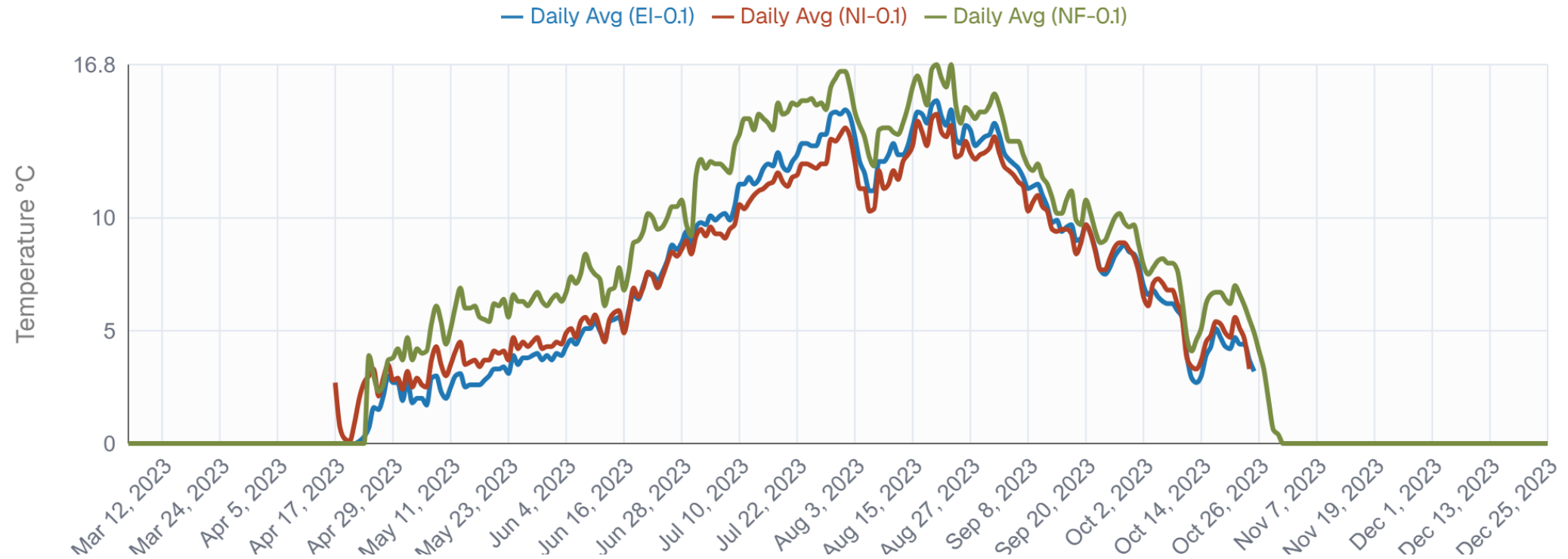
# MAP EXPLORER

The screenshot displays the Grand County Water Information Network (GCWIN) Map Explorer interface. The main map area shows a topographic view of Grand County, Colorado, with various monitoring stations overlaid. The interface includes a navigation bar at the top with the GCWIN logo, "Home", "Resources", and "GCWIN Website" links. The right sidebar contains several interactive panels:

- Map Layers:** Includes a tip: "TIP: The share link saves your current map view, layer selections, and filters to a URL you can bookmark or send to others!"
- Data Collection:** Features a search bar for monitoring locations and a legend with the following items:
  - Climate Station (teal star icon)
  - River Station (blue circle icon)
  - Ditch, Tunnel or Pump (green square icon)
  - Lake or Reservoir (purple triangle icon)
  - Other (grey circle icon)
- Filters:** Includes "Color & Station Filters" with dropdowns for "Station Type" and "Watersheds", and "Data Category" and "Data Provider".
- Data Age:** Offers filters for "Current - last 24 hours", "Recent - last 5 years", and "All".
- Record Count:** A control to set the number of records displayed, currently set to 1.

# DATA VISUALIZATIONS

Water Temperature



# DATA DOWNLOAD & INTEGRATION



## Query & Download Data ⓘ

Select a data category and choose the specific data you want to download

### 1. Select Download Category

Data Category

Continuous Flow, Temperature & WQ ▾

Selected: Continuous Flow, Temperature & WQ

### 2. Select Date Range (Optional)

ⓘ Natural Language Date Inputs ▾

From Date

2021-01-16



To Date

To: today (blank = end of PoR)



### 3. Select Data to Include (26 selected)

Select All

Select None

ⓘ How Data Selection Works

# **SMP WEBSITE & BRANDING**

---



# GRAND COUNTY

## STREAM MANAGEMENT PLAN

### WEBSITE DEVELOPMENT

- User-friendly & interactive website
- Communicate stream grades, prioritization & projects

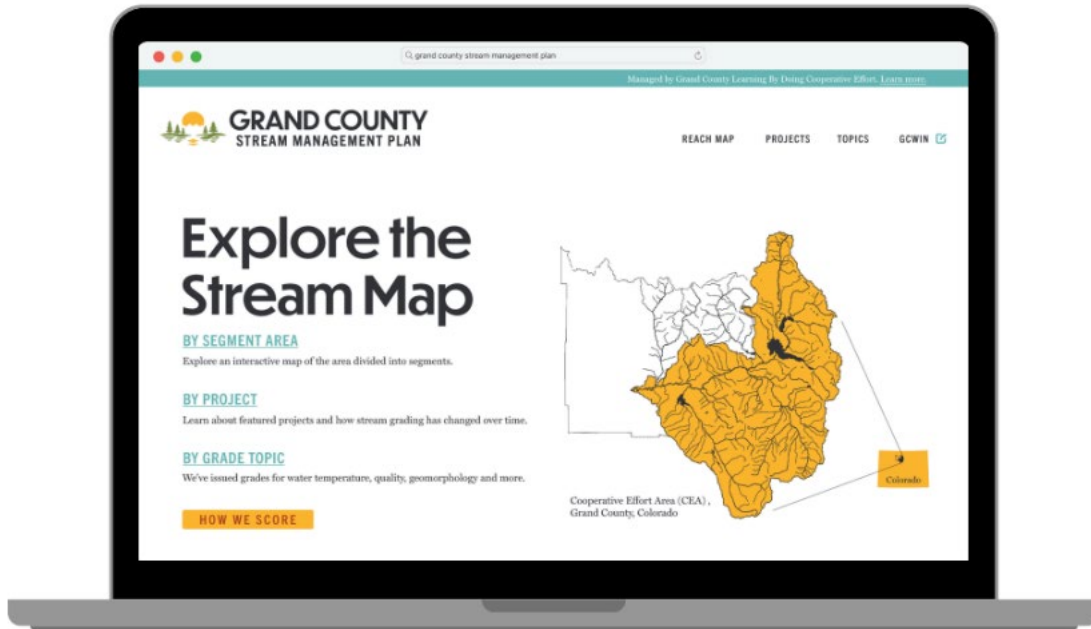
### BRANDING

- Stream Management Plan logos
- Accessible color palette
- Fonts
- Icons

### PUBLIC OUTREACH

- Comprehensive materials for communication
- Public outreach strategy
- Beta-testing website

# DATA INTEGRATION



- Grades
- Reach Information
- Reach Prioritization
- Data Visualizations
- Project Pages



# LOGOS

---



**GRAND COUNTY**  
**STREAM MANAGEMENT PLAN**

LEARNING BY DOING



**GRAND**  
**COUNTY**

**STREAM MANAGEMENT PLAN**

LEARNING BY DOING




# ICONS





# COLORS & FONTS



## FRASER RIVER WATER TEMPERATURE GRADING

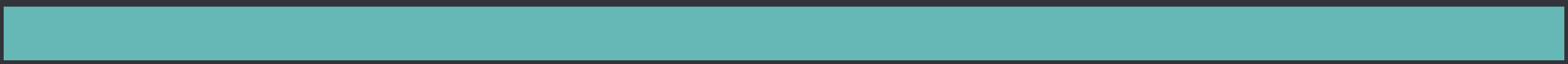
Lorem ipsum dolor sit amet, consectetur adipiscing elit, sed diam nonummy nibh euismod tincidunt ut laoreet dolore magna aliquam erat volutpat.

Ut wisi enim ad minim veniam, quis nostrud exercitation ullamcorper suscipit lobortis nisl ut aliquip ex ea commodo consequat. Duis autem vel eum iriure dolor in hendrerit in vulputate velit esse molestie.

JULY 23, 2025



	PASS
	PASS
Pass	PASS
Pass	PASS
	PASS
	PASS
Pass	PASS
	PASS
Pass	PASS
Pass	PASS
	PASS
	PASS



# NEXT STEPS

01

**DATA INTEGRATION**

02

**BETA TEST SMP & GCWIN WEBSITES**

03

**STAKEHOLDER &  
COMMUNITY OUTREACH**



**GRAND COUNTY**  
**STREAM MANAGEMENT PLAN**

LEARNING BY DOING

**QUESTIONS?**